

# UNHCR Afghanistan

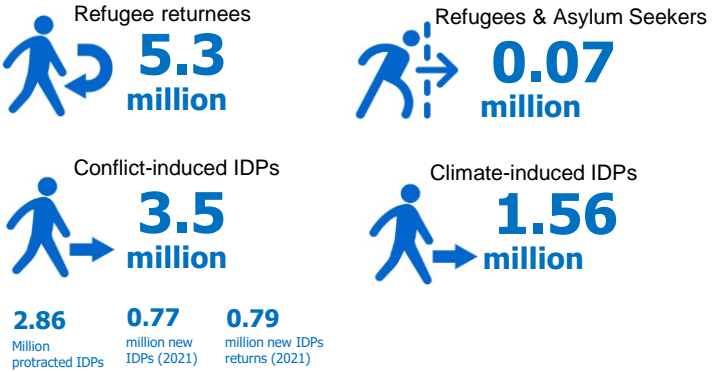
**7 June 2022**



# 1. Displacement Dynamics & UNHCR Strategic Response

## Persons of Concern to UNHCR (PoC)

**10** million people



## UNHCR Strategic Response

Over 16.2 million Afghans, including 4 million women and 9 million children face imminent Protection Risks



Increase displacement trends and population outflows within and across borders.

**Protection and Lifesaving Emergency Assistance**

**UNHCR Response**

**Improving access to essential services to mitigate displacement**

# 2. UNHCR Operational Presence

**9**  
offices

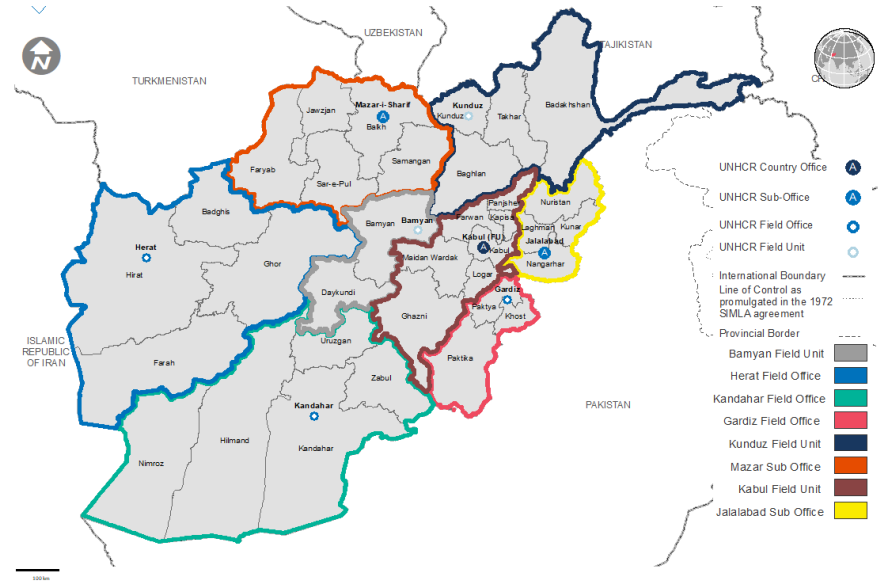
- 1** country office in Kabul
- 2** sub offices in Jalalabad & Mazar
- 3** field offices in Kandahar, Herat & Gardez
- 3** field units in Kabul, Bamyan & Kunduz

**1,386**  
staff

- 215** UNHCR national staff
- 71** UNHCR international staff
- 1,100** partner staff

**33**  
partners

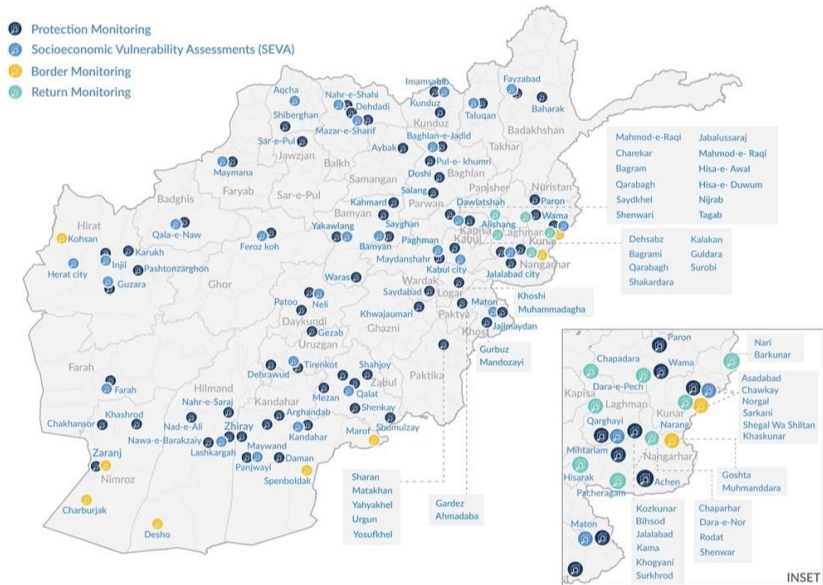
- 18** national partners
- 14** international partners
- 1** government counterpart



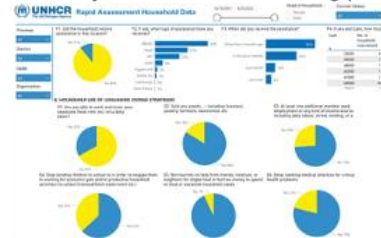
**34**  
provinces

**401**  
districts

# 3. Evidence-based Response



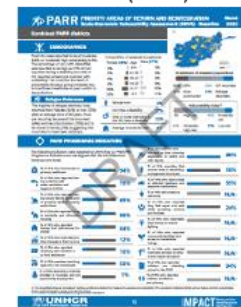
## Community-based Protection Monitoring (CBPM)



## Hazard Vulnerability and Risk Assessment (HVRA)



## Socioeconomic Vulnerability Assessment (SEVA)



## Neighbourhood Mapping (nMAP)



# 4. UNHCR Afghanistan: Strategic Response

## 1. Life-saving Emergency Assistance



NFI distribution in Herat

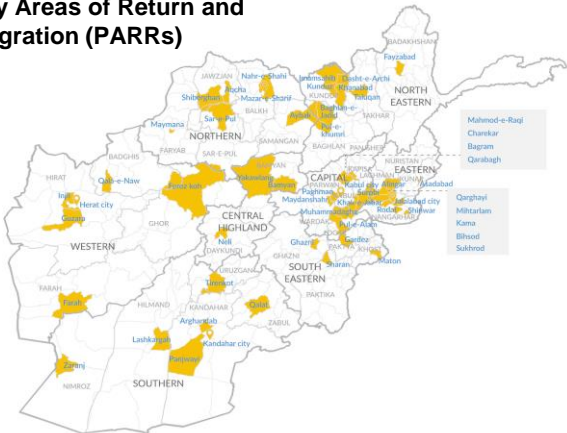


2021: No. of People reached



## 2. Area-based approach to forced displacement (since 2017)

Priority Areas of Return and Reintegration (PARRs)



**11,000** villages in **50** districts & **5** cities  
(Kabul, Jalalabad, Kandahar, Herat & Mazar)

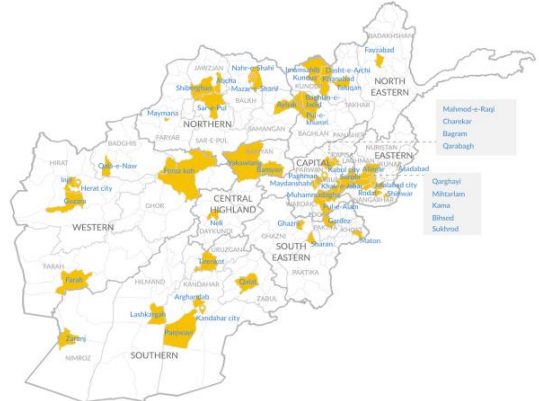
**17** million including **6** million forcibly displaced  
(returnees, IDPs, refugees, host community)

- Key response of the **Solutions Strategy for Afghan Refugees (SSAR) & SSAR Support Platform Core Group in Afghanistan**
- **SG EC decision March 2020/20**: concrete confidence-building effort towards peacebuilding through HDP interventions
- UN TEF, STFA & ABADEI strategy (UNDP)

# 5. Priority Areas of Return and Reintegration (PARRs)

Mitigating further displacement, enhancing recovery & resilience

## Priority Areas of Return and Reintegration (PARRs)



1. Improving access to **Basic, Social, Physical** services
2. **Protecting livelihoods & Promoting self-reliance**

## PARR multi-sectorial interventions (2019-2021)

Khost – Road network



SHG-based greenhouses



Bamyan – irrigation canal



Kabul – Water reservoir



Central region – market-based small businesses



Schools and Health Clinics

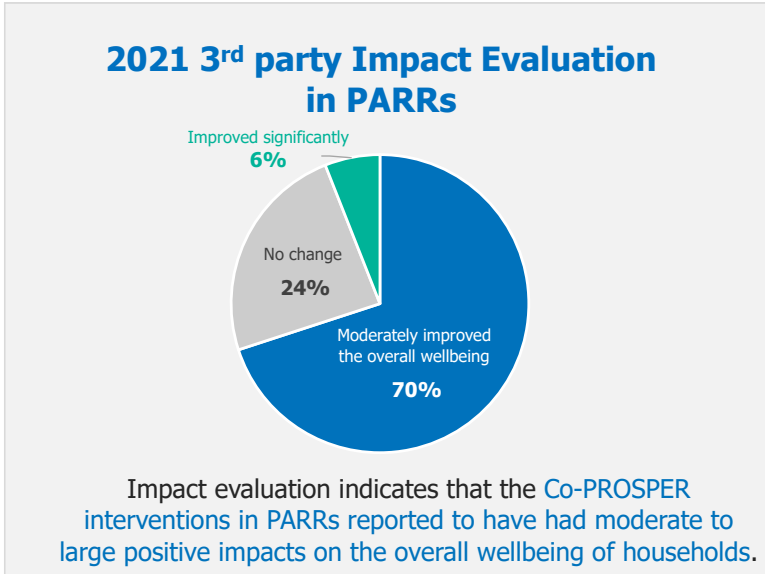


# 5. PARRs: Impact

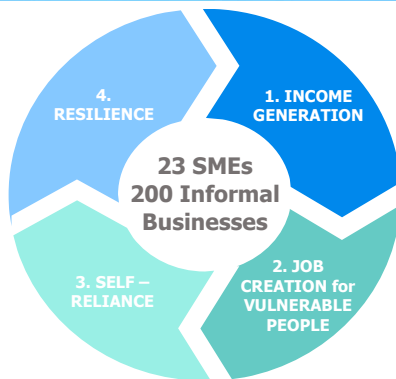
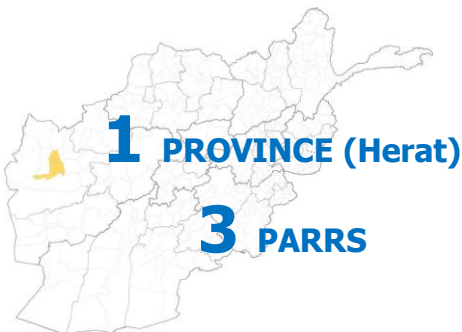
## 3<sup>rd</sup> party impact evaluation - 2021

Has improved access to services (healthcare, water, education, etc.) **65%**

Has improved livelihood opportunities or household income **69%**



# PILOT JOINT PROGRAMME: COMMUNITY RESILIENCE IN PARRS – RESULTS & IMPACT



Enabling Protection Environment:

SAFE ACCESS      IMPROVED CONNECTIVITY

Key Sectors Targeted



Livelihoods    Infrastructure    Energy

**Women Empowerment**

**76%**      **65%**

Current Beneficiary Selection

Expected Beneficiary Expansion

**OUTCOME I:** Improved access to basic services and employment prospects



- Grants to **23 SMEs** enhancing employment opportunities for **over 380** men and women.



- Planned establishment of **solar energy system** for **Women Business Centre** in Guzara PARR.

**241**

**140**

**OUTCOME II:** Enhanced capacity of IDPs and returnees to reintegrate, particularly women



- Supporting **200 women-led informal businesses**, providing employment opportunities to the **most vulnerable communities**.



**200+**

Women Employees

**OUTCOME III:** Enhanced connectivity to market, value chains through improved infrastructure



- Cash for Work schemes** enhancing **community infrastructure** through flood protection walls, bridges, drainages etc. providing **7036** working days and **indirectly protecting 4,000 households**



**Thank you**