

## Professor (Dr.) Khimji Vaghjiani - Torrens University Australia

The use of data in infrastructure analysis and spill over benefits to communities



# The use of data in infrastructure analysis

Case Studies and important of data to analysis impact of infrastructure investment.

The potential for spillover benefit >

1. Innovation
2. Jobs
3. Investment attraction
4. Housing
5. Ecological
6. Environmental
7. Transport



Source: <https://asean.org/vientiane-declaration-on-promoting-infrastructure-development-cooperation-in-east-asia/>

# What is emerging is unknown – hence impact on investment is unknown



**World 2030**  
Population : 8.5bn

**Technology Trends**  
Driverless cars : increase  
Tele-work : increase  
Tele-education : increase  
Tele-health : increase  
Smart grids : ubiquitous  
Smart factories : ubiquitous



# New data points are everywhere

World 2030

- Population : 8.5bn
- Average Age : increase
- Retirees to Working age : increase
- Urbanisation : increase
- Unemployment : mixed
- # Megacities : increase
- Dominant Industries : Services
- Climate: Warmer and Changed

Cost of old infrastructure and opportunity costs ?

Data points

\*households spending \$11-110 per day per person in 2011 purchasing power parity  
<https://www.brookings.edu/blog/future-development/2018/09/27/a-global-tipping-point-half-the-world-is-now-middle-class-or-wealthier/>

As of 2018, most of the world is now middle class or wealthier\*

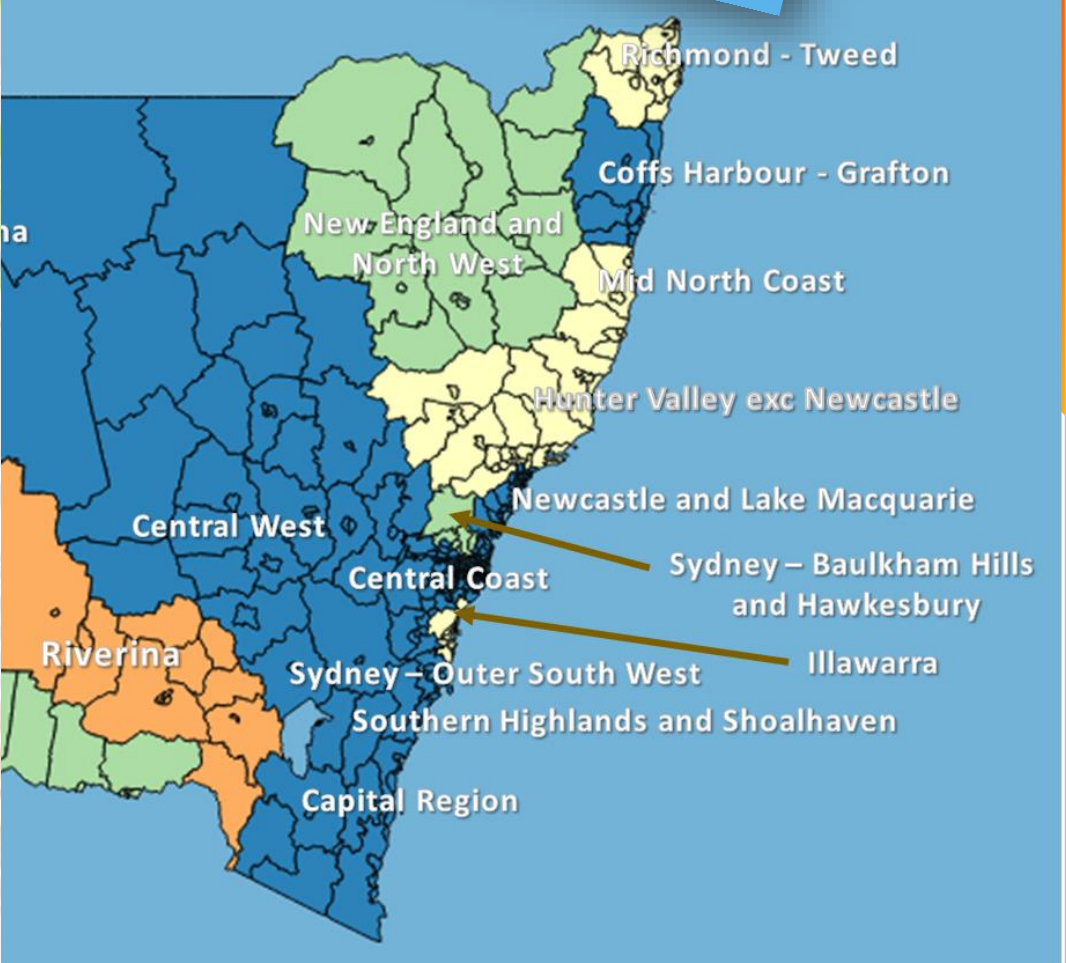
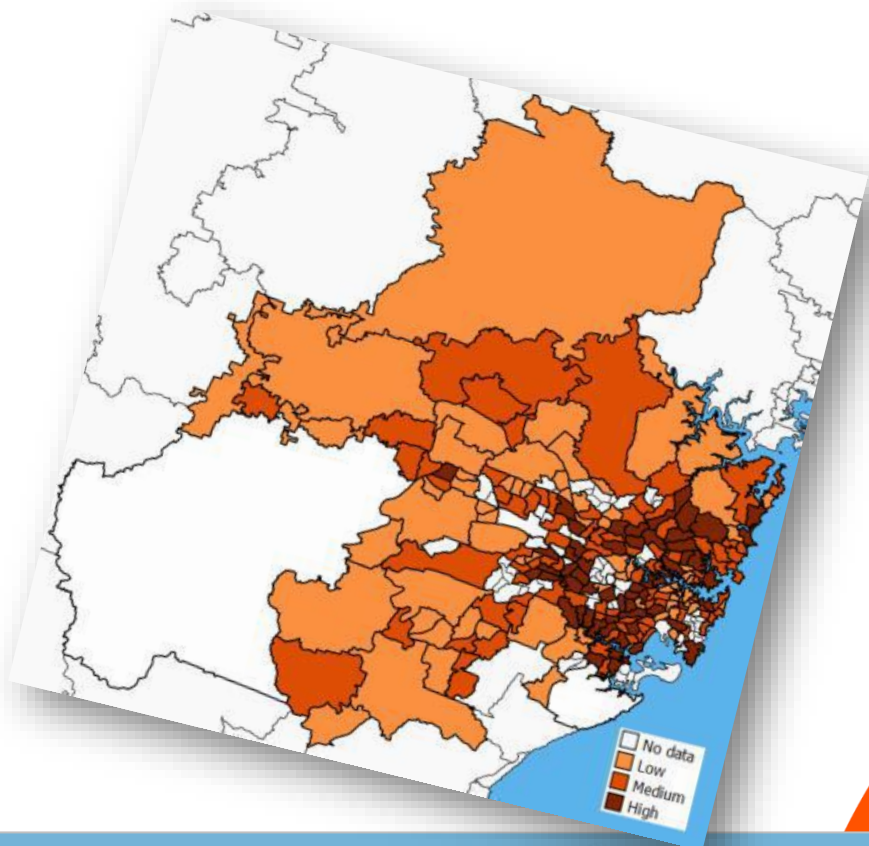
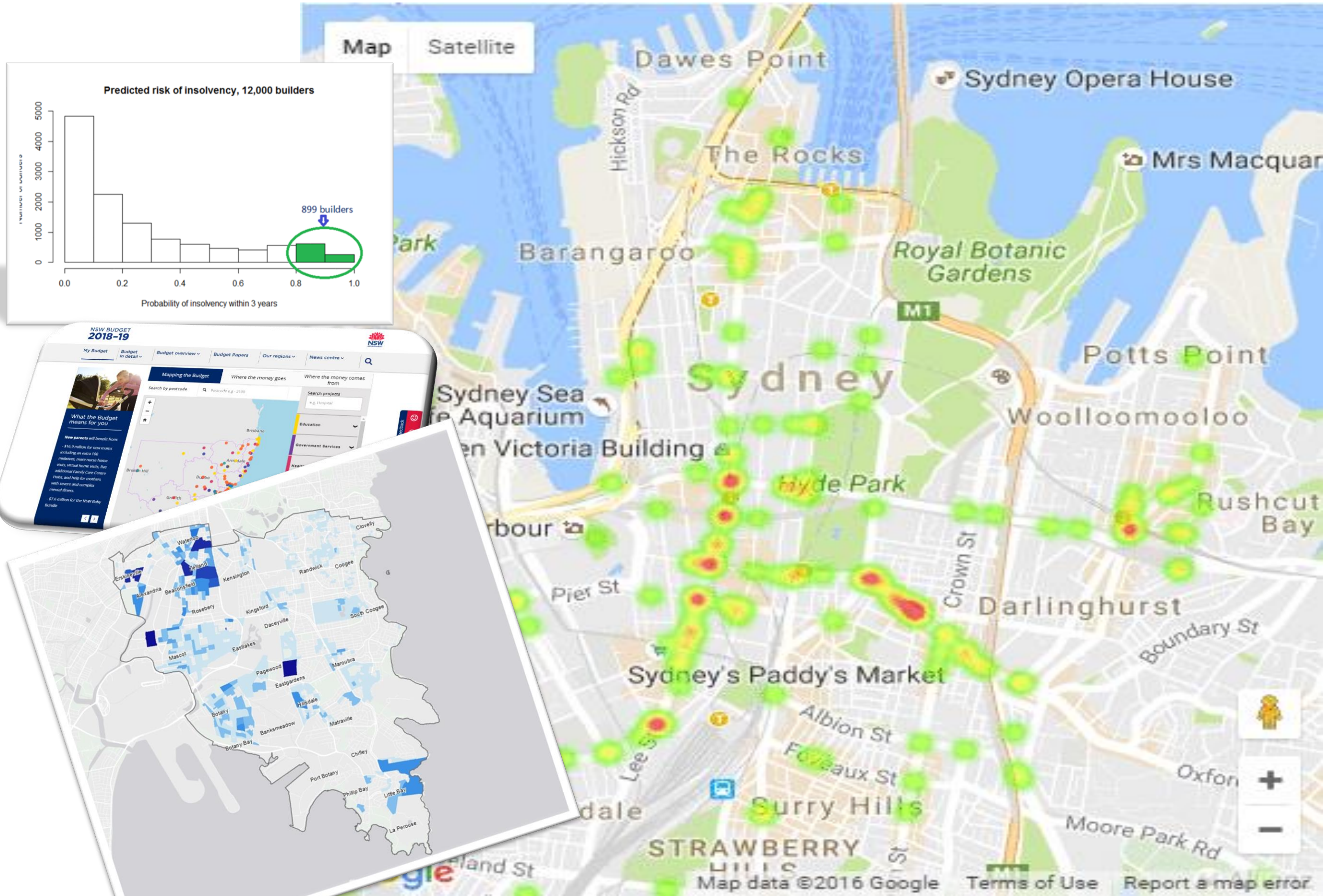
# An interconnected world view !

The world of 2030  
Global Challenges

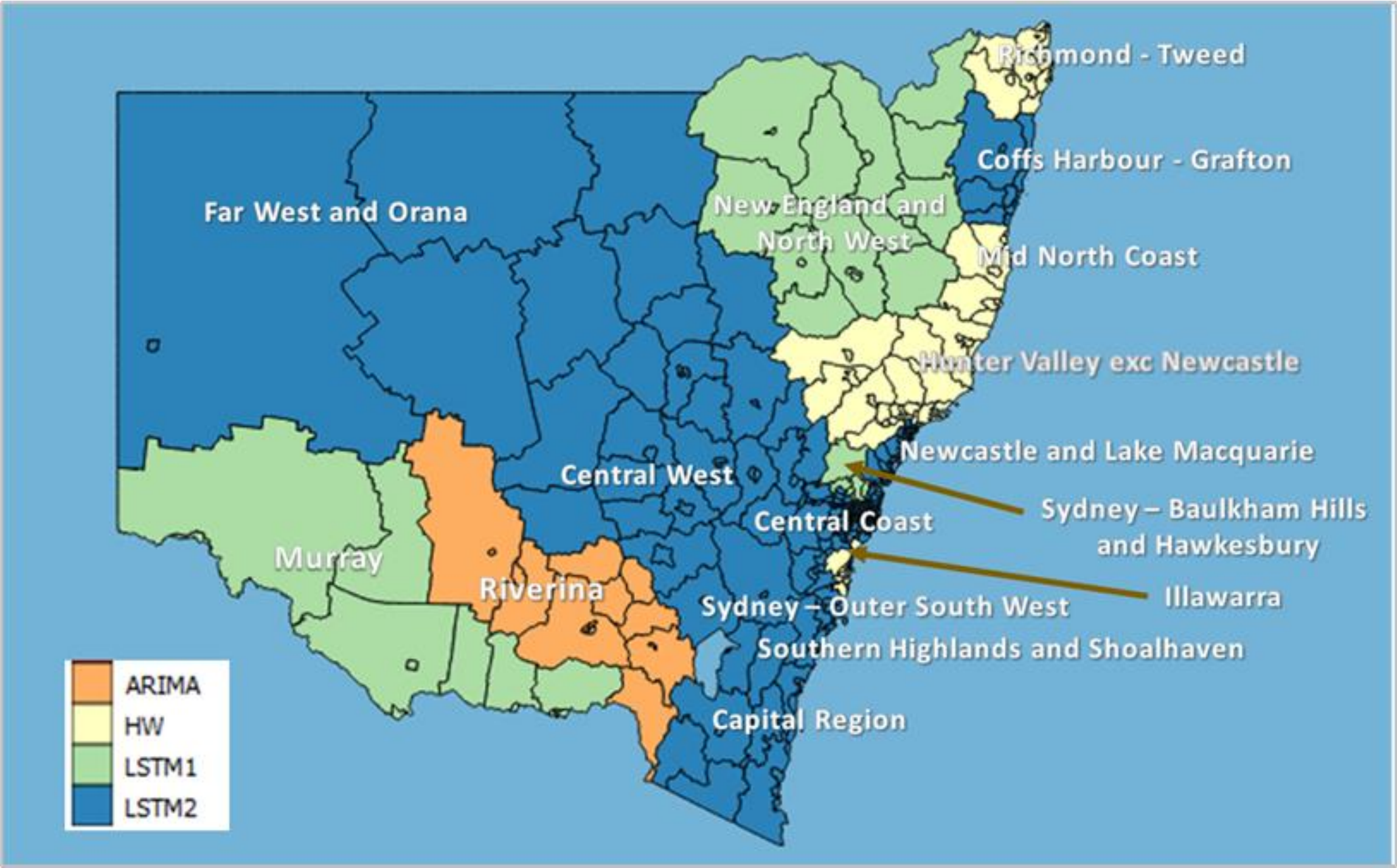
<b>1</b> NO POVERTY 	<b>2</b> ZERO HUNGER 	<b>3</b> GOOD HEALTH AND WELL-BEING 	<b>4</b> QUALITY EDUCATION 	<b>5</b> GENDER EQUALITY 
<b>6</b> CLEAN WATER AND SANITATION 	<b>7</b> AFFORDABLE AND CLEAN ENERGY 	<b>8</b> DECENT WORK AND ECONOMIC GROWTH 	<b>9</b> INDUSTRY, INNOVATION AND INFRASTRUCTURE 	<b>10</b> REDUCED INEQUALITIES 
<b>11</b> SUSTAINABLE CITIES AND COMMUNITIES 				<b>12</b> RESPONSIBLE CONSUMPTION AND PRODUCTION 
<b>13</b> CLIMATE ACTION 	<b>14</b> LIFE BELOW WATER 	<b>15</b> LIFE ON LAND 	<b>16</b> PEACE AND JUSTICE STRONG INSTITUTIONS 	<b>17</b> PARTNERSHIPS FOR THE GOALS 

**THE GLOBAL GOALS**  
For Sustainable Development

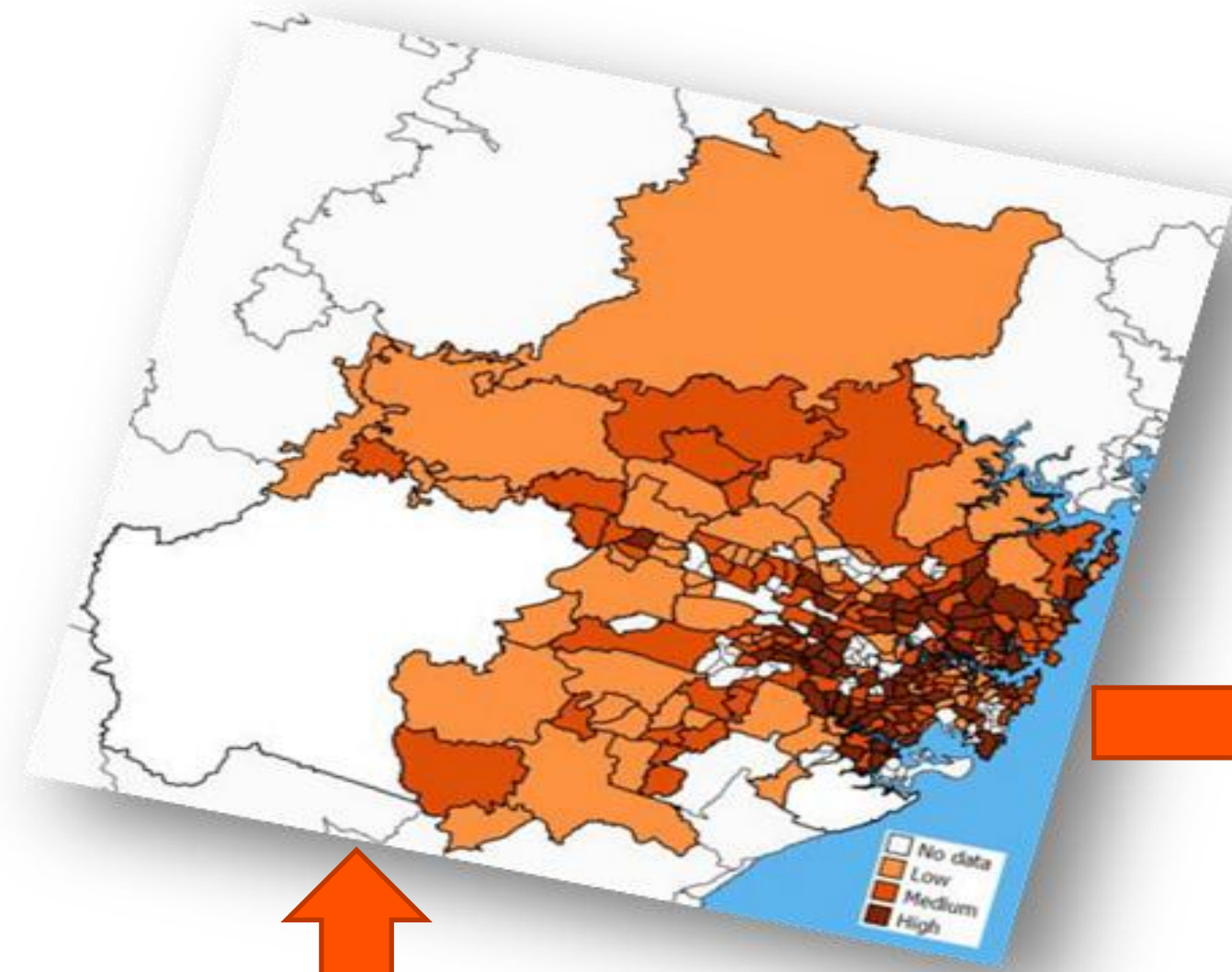
# Data in the real world



# Impact of every \$ invested should lead to job's and wages in a particular region



# Impact of rail infrastructure to local economy



Source: <https://www.theaustralian.com.au/business/property/highrise-construction-hits-low-point/news-story/88653f4a55f5e71884897b1cdd71f614>



Source: <https://transportsw.info/travel-info/ways-to-get-around/metro/>



Source: <https://www.bbc.com/worklife/article/20200413-how-factories-change-production-to-quickly-fight-coronavirus>



# Govt services investment to local schools and surrounding areas region



Source: <https://www.theguardian.com/culture/2015/jan/02/the-10-best-school-buildings>



Wealth creation or not ?

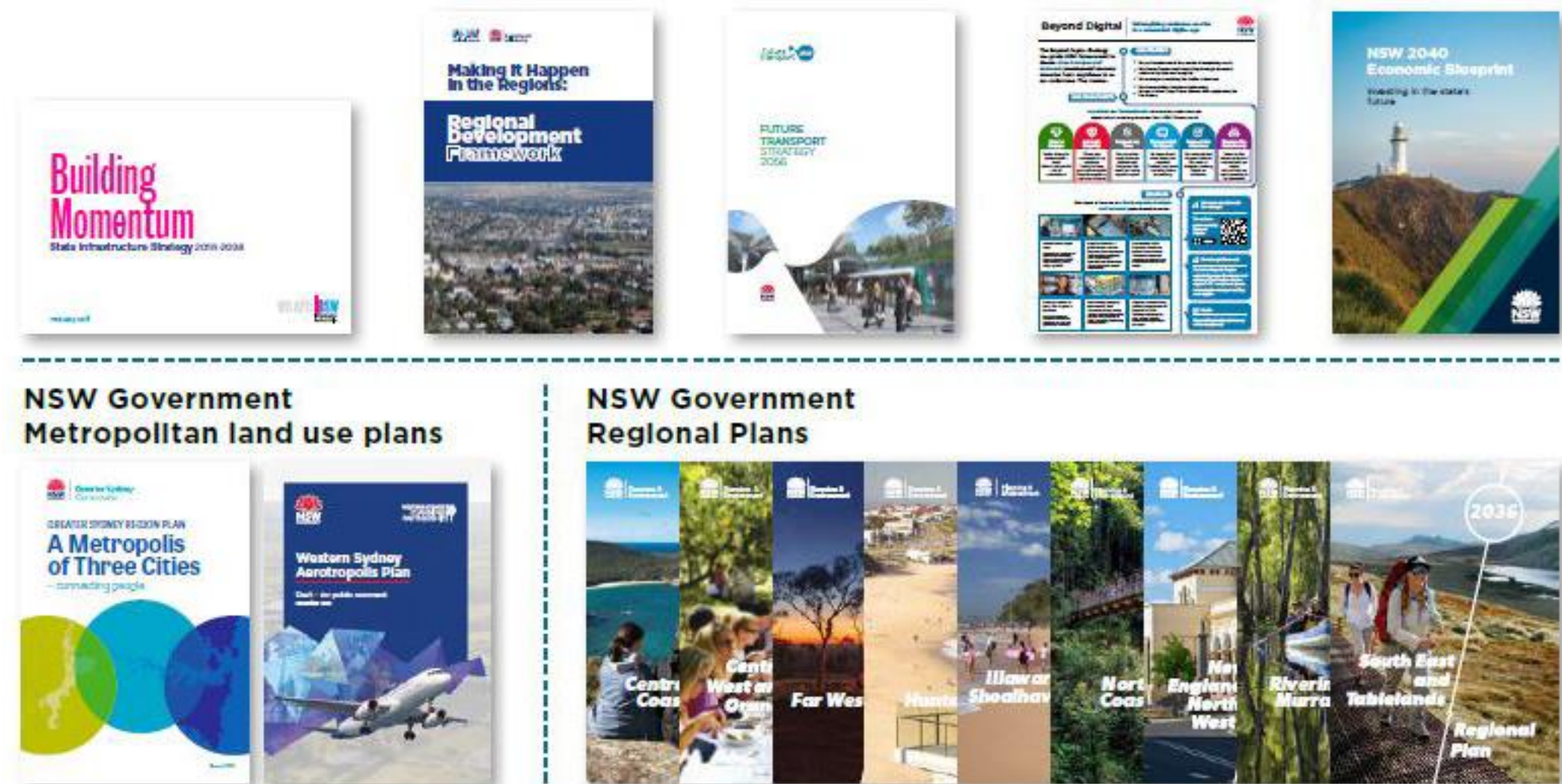
\$\$\$\$\$\$\$



Source: <https://www.kings.edu.au/exploring/senior-school/senior-school-facilities-in-detail/>

# Whole of community perspective

Enhanced by Digital Twins, Data Sharing, Security and Privacy



<https://www.dpie.nsw.gov.au/our-work/strategy-and-reform/smart-places/smart-places-strategy/delivering-outcomes-for-customers>

# Data Sharing framework and trust network



# Factors for data analytics

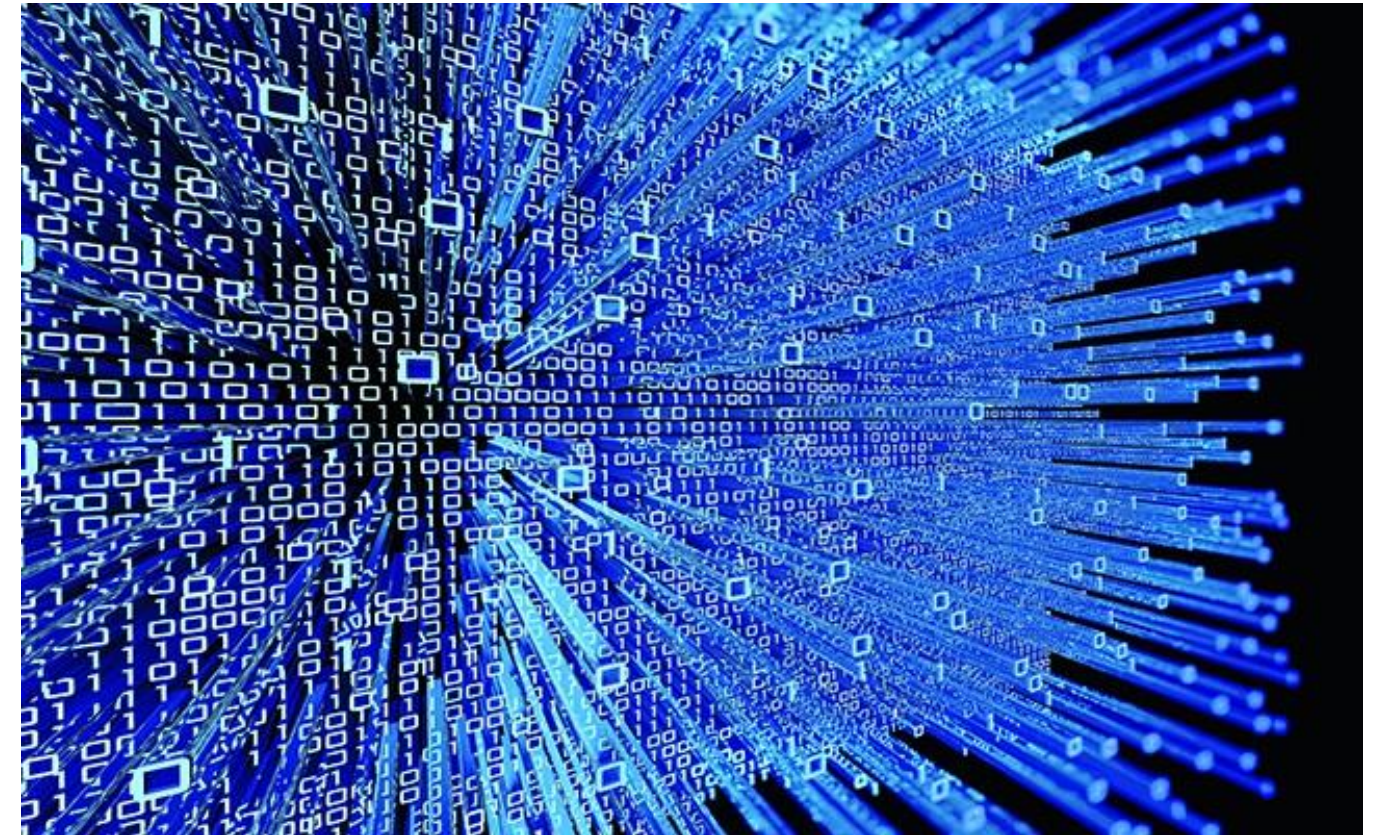
What data is required ?

Is the data reusable ?

Is the data quality consistent ?

Is the data supply clean and easy ?

Is it open data or not



[www.towardsscience.com](http://www.towardsscience.com)

# Key data outcomes to foresee



[www.combox.ai](http://www.combox.ai)

What will the data inform you ?

How many formats will the output be in ?

What decisions and value will executives and decision makers make?

What data will be required on an ongoing basis ?

# Spill-over benefits to look out for



[www. https://www.pitara.com/science-for-kids/5ws-and-h/why-does-milk-spill-over-when-it-boils/](https://www.pitara.com/science-for-kids/5ws-and-h/why-does-milk-spill-over-when-it-boils/)



[www. Weforum.org](http://www.Weforum.org)



[www. Wikipedia.com](http://www.Wikipedia.com)



[www. Wsp.org](http://www.Wsp.org)



[www. Trsil.com](http://www.Trsil.com)



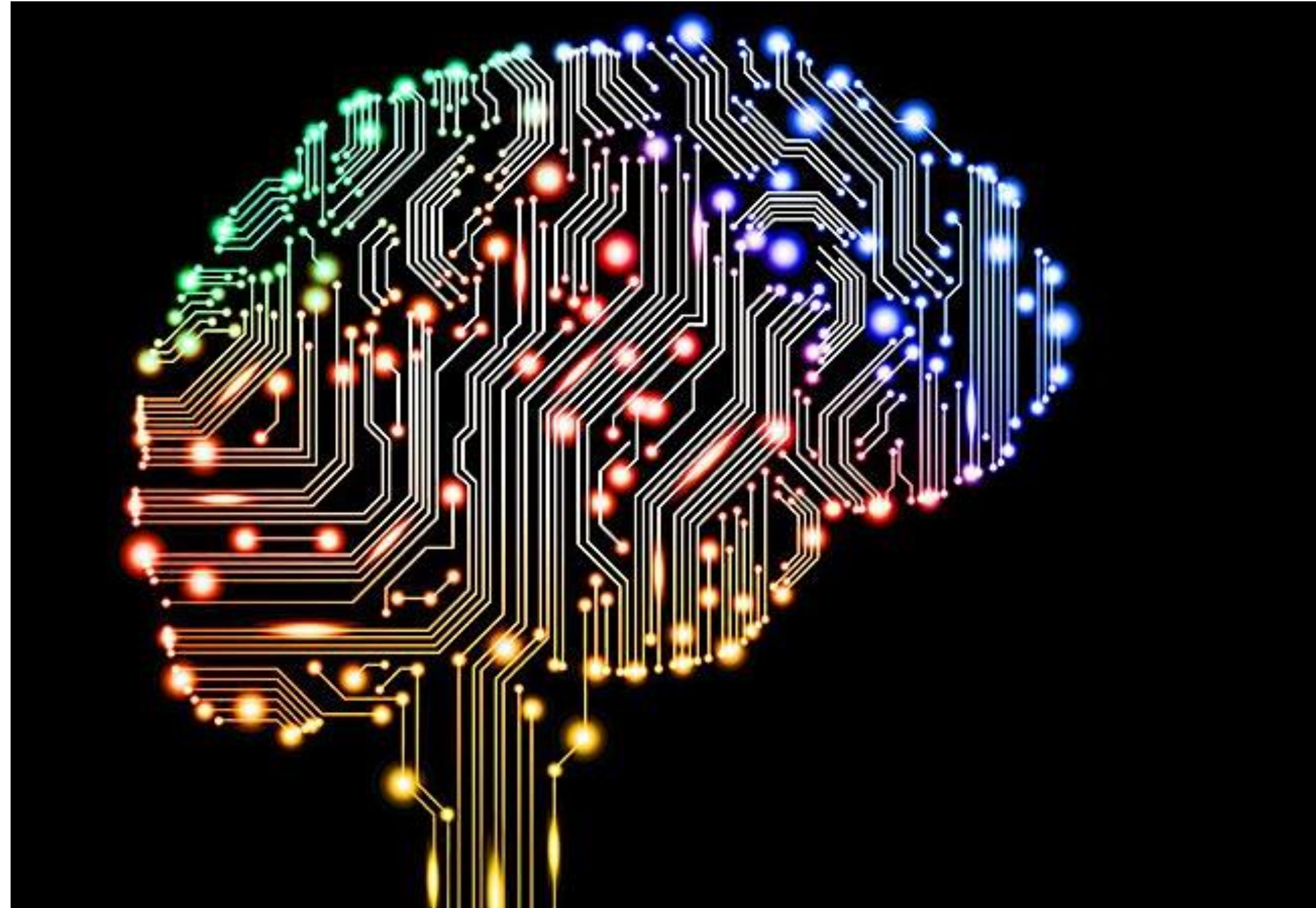
[www.abc.net](http://www.abc.net)



[www.travellor.com](http://www.travellor.com)



<https://www.utblick.org/2021/11/11/rd-innovation-and-tax-policy/>



***Everything should be made as simple  
as possible, but no simpler.***

Albert Einstein

Dr. Khimji Vaghjiani  
Consultant Asian Development Bank  
Chief Innovation Advisor  
Professor of Innovation

e khimjiv@gmail.com | <https://www.linkedin.com/in/dvaghjiani/?originalSubdomain=au>

Love what  
you do