



Integrated Support for the Aral Sea in Uzbekistan

November 2020



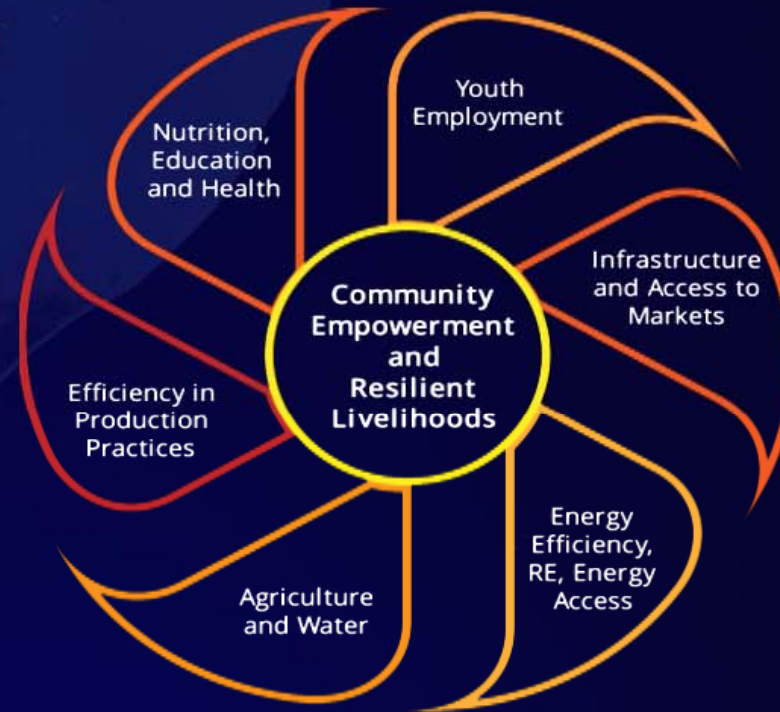
The Aral Sea region remains vulnerable and deprived.
Integrated solutions are required to address the
interconnected issues that have compounded over time.



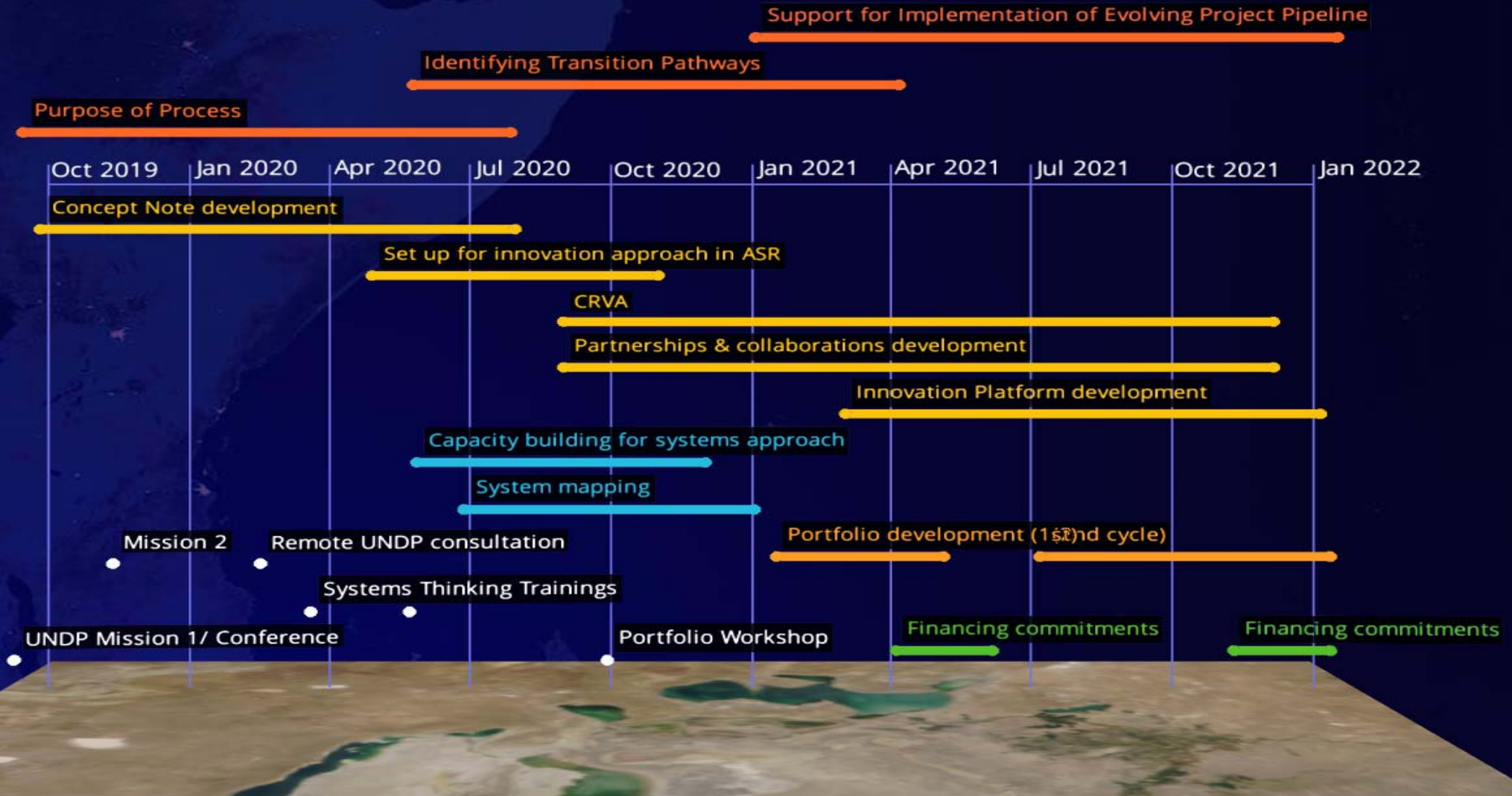
Late August 2018
Source: MODIS on
NASA's Terra
satellite

The Vision for the Aral Sea Region

A Zone for Ecological Innovation and Technology



From Data and Systems to Unlocking Financing for Resiliency and Improving Livelihoods



The UNDP Approach

DATA-DRIVEN

Generate data insights/evidence to drive decisions for intervention



SYSTEMS THINKING

Create capabilities to see and act on the relationships between issue areas and influencers



UNLOCKING FINANCING

Apply insights and capabilities toward identifying appropriate financing for systemic change

Analysis of Project Investments



Afforestation

Water resource management

Sustainable rural development (general)

Tourism

Awareness

Water infrastructure / irrigation canals

Ecosystem based adaptation/ conservation

Climate resilience of smallholder farmers

Systems Analysis of Projects & Thematic Areas

DRIVEN

THINKING

PLANNING



* Network graph for illustrative purposes

Systems Analysis of Projects & SDGs

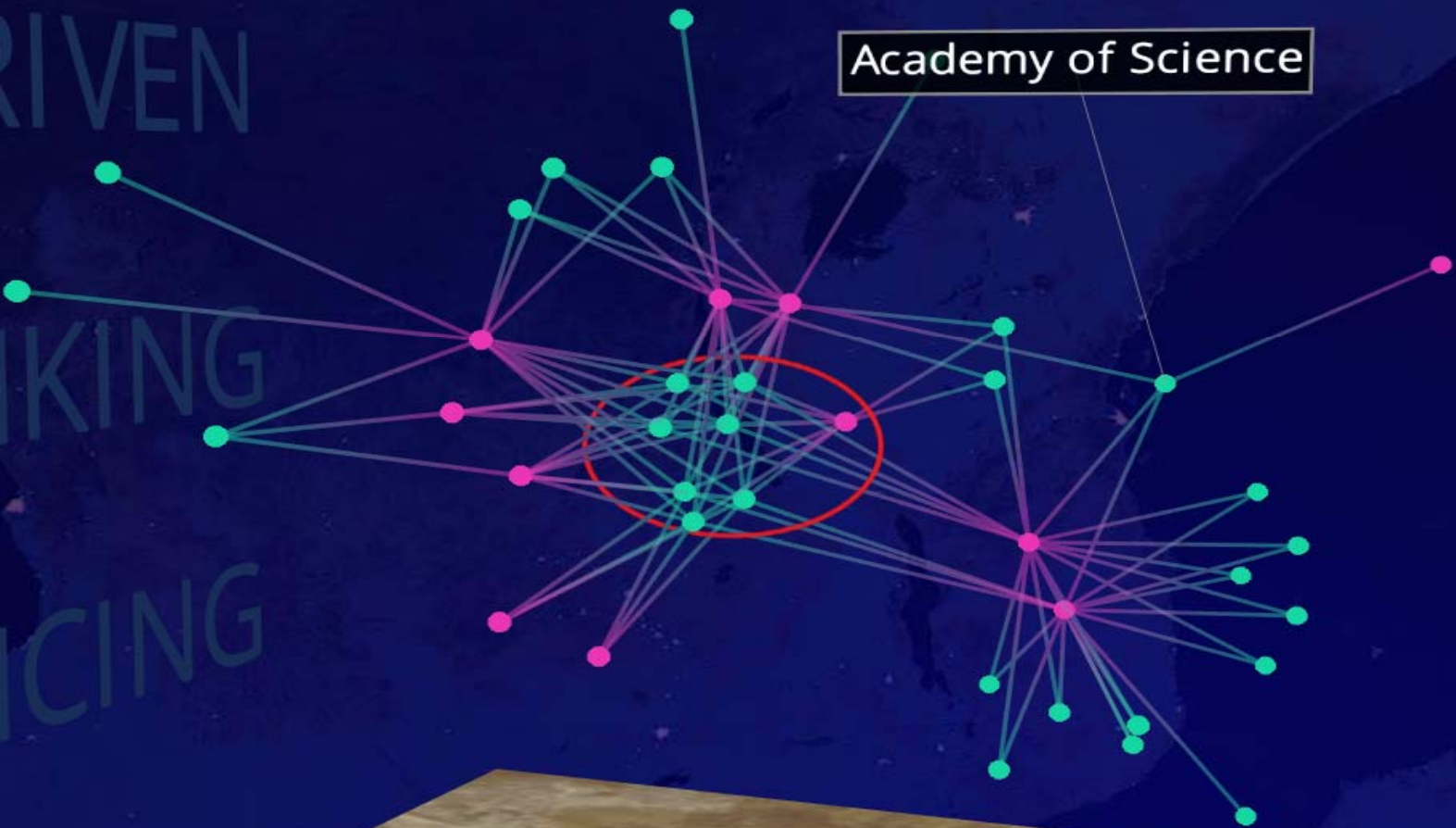
Academy of Science

RIVEN

KING

ICING

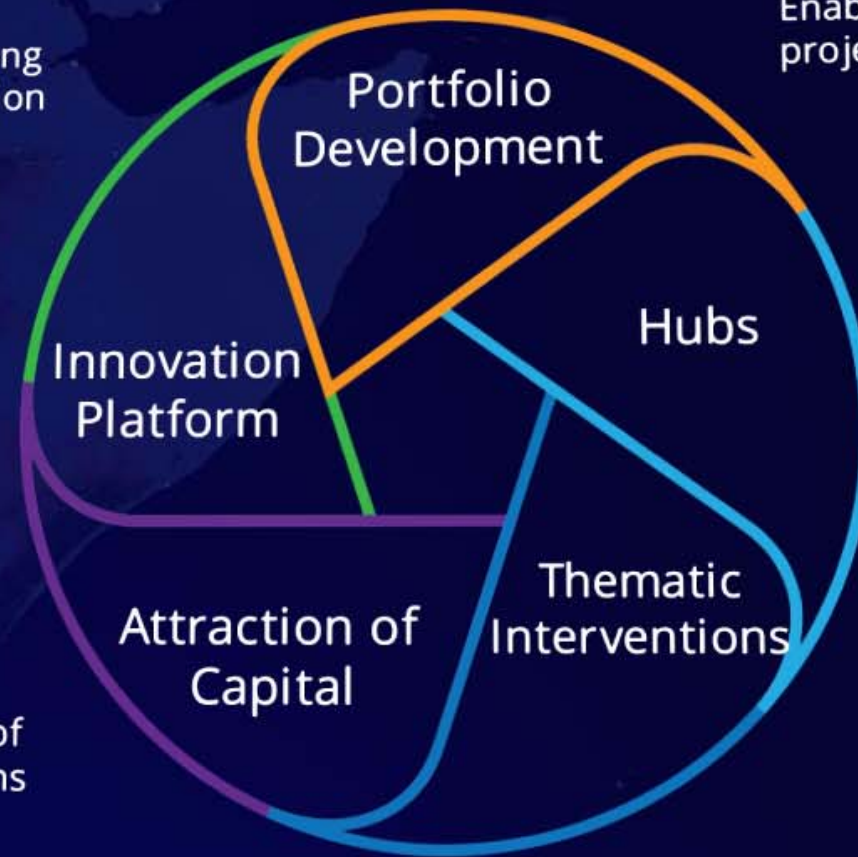
* Network graph for
illustrative purposes



Using Systems Analysis for Integrated Intervention

Building capabilities and fostering cross-functional participation

Enabling a constantly evolving "innovation project pipeline"

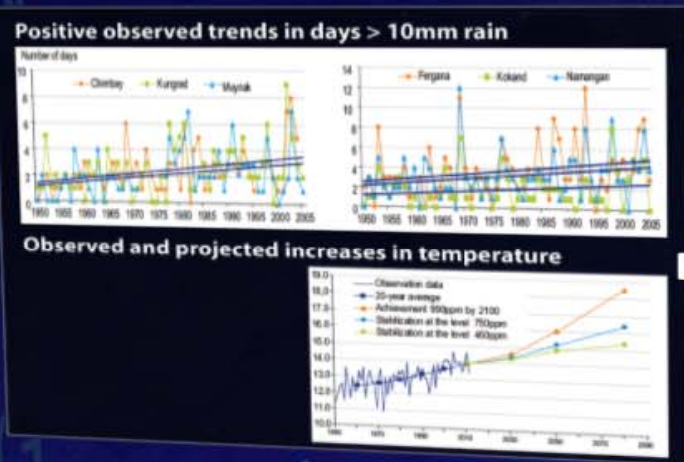


Strategic partnering for financing of high-impact interventions

Applying a Data-Driven Process

Risk Identification & Mapping

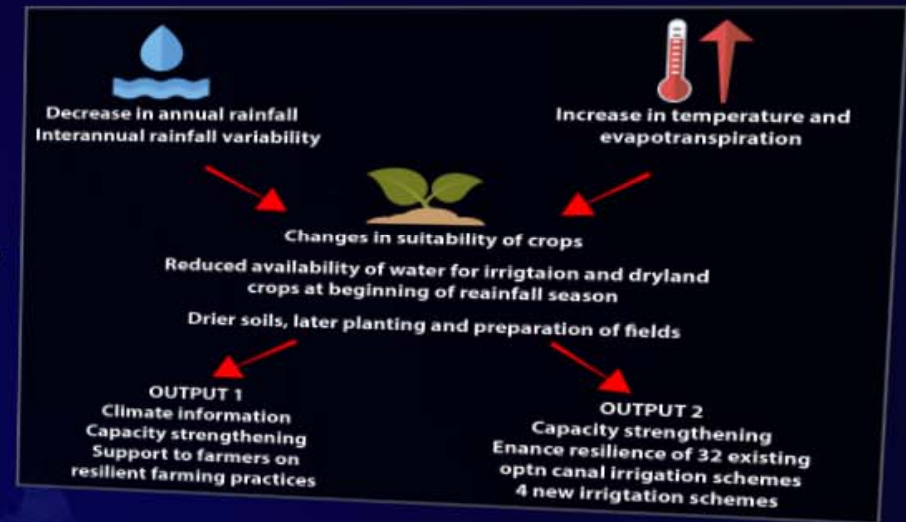
Climate Analysis and Projections



Effective Monitoring System



Evidence-Based Investment Feasibility



UNDP's approach will create an integrated model and offer insights based on a confluence of indicators to drive portfolio decision-making



Forward Outlook

Planning Next Steps

Data modelling with Columbia University, Ministry of Agriculture and Water Resources, and UZHYDROMET (Ongoing)

Preliminary data analysis and portfolio mapping to contribute to investment decisions (January 2021)

Broaden partnerships for capability building in systemic risk to deepen connections across portfolios in MPHSTF

